

Lake Sammamish

LEGEND

- 2' Asphalt
 - 2.5' Asphalt
 - 5' Asphalt
 - 7' Asphalt
 - 8' Asphalt
 - 4' Concrete
 - 5' Concrete
 - 6' Concrete
 - 7.5' Concrete
 - 8' Concrete
 - 8.5' Concrete
 - 10' Concrete
 - 11' Concrete
 - 12' Concrete
 - 12' Multi Purpose Trail
-
- Schools
 - Facility for Senior Citizens and the Disabled
 - Park & Ride
 - TP-NRCA Tradition Plateau - Natural Resource Conservation Area
 - C-REC Conservancy Recreation
 - CF-F Community Facilities - Facilities
 - CF-R Community Facilities - Recreation
 - CF-OS Community Facilities - Open Space
 - C-RES Conservancy Residential - 1 du/5 acres

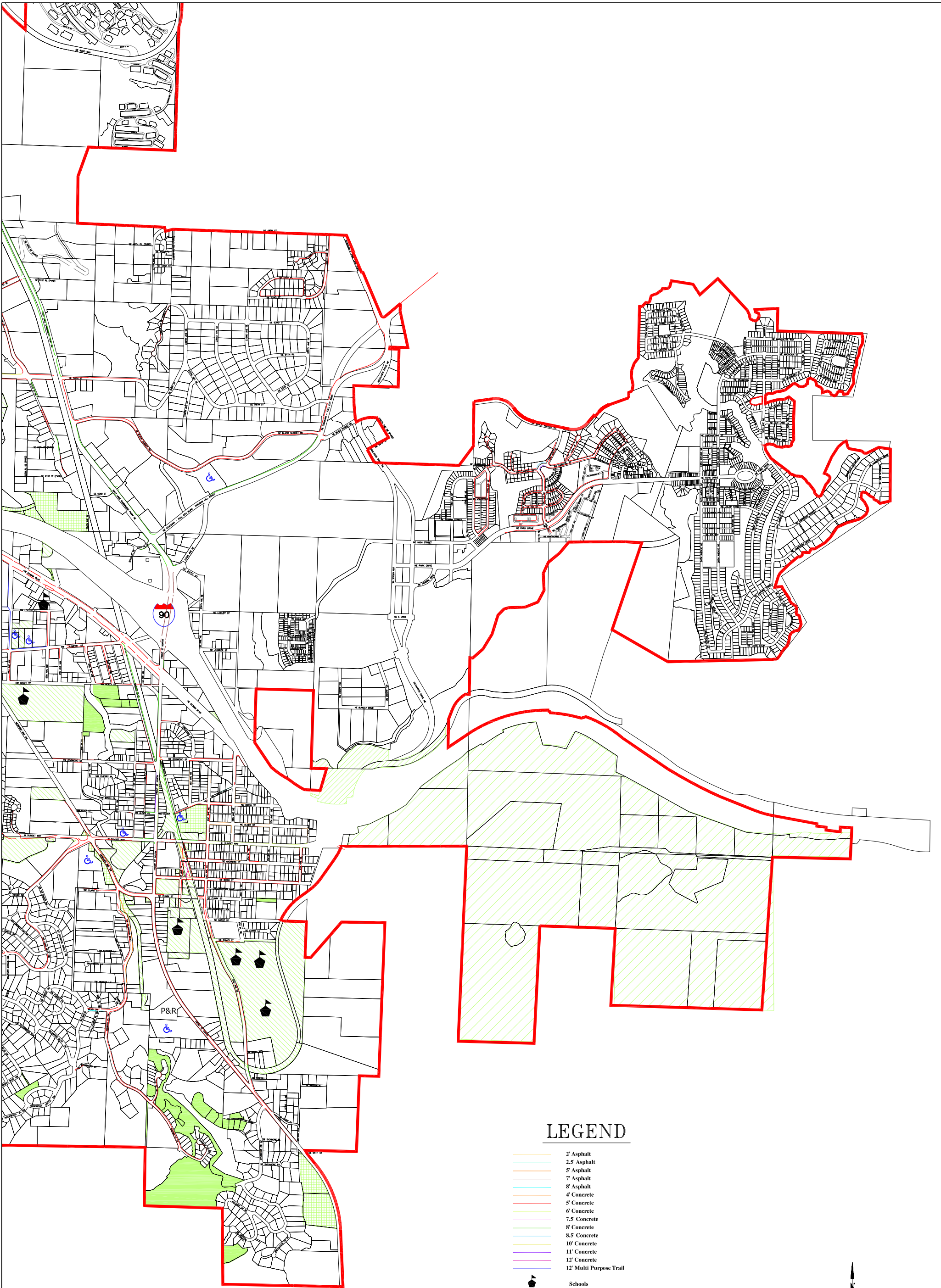


CITY OF
ISSAQUAH

FIGURE 16

CITY OF ISSAQUAH SIDEWALK INVENTORY

Revision Date 12/04/06
Ord. 2474



LEGEND

- 2' Asphalt
 - 2.5' Asphalt
 - 5' Asphalt
 - 7' Asphalt
 - 8' Asphalt
 - 4' Concrete
 - 5' Concrete
 - 6' Concrete
 - 7.5' Concrete
 - 8' Concrete
 - 8.5' Concrete
 - 10' Concrete
 - 11' Concrete
 - 12' Concrete
 - 12' Multi Purpose Trail
-
- Schools
 - Facility for Senior Citizens and the Disabled
 - P&R
-
- TP-NRCA Tradition Plateau - Natural Resource Conservation Area
 - C-REC Conservancy Recreation
 - CF-F Community Facilities - Facilities
 - CF-R Community Facilities - Recreation
 - CF-OS Community Facilities - Open Space
 - C-RES Conservancy Residential - 1 du/5 acres

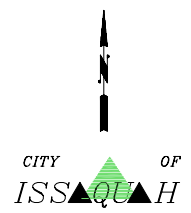


FIGURE 16

**CITY OF ISSAQUAH
SIDEWALK INVENTORY**

Revision Date 12/04/06
Ord. 2474